

**Classic Maya Ceramics with Glyphs at Los Angeles County Museum of Art  
(LACMA)**

Our Corpus Volume 19 is an interesting departure from previous corpora. In 2025, Dr. Diana Magaloni curated an exhibition at LACMA on Mesoamerican color, which is her specialty and field of expertise. When I visited this show last year, I saw several remarkable Maya ceramics with glyphs that I knew epigraphers worldwide would love to see. Although shooting conditions were not ideal, using different lengths of lenses and a good quality Nikon camera (d850) I was able to capture almost 100% of the pieces with hieroglyphs.

Working with my design guru here at Contributions to Mesoamerican Studies (CtMS), we were able to remove much of the distortion and skewing and to smooth out the uneven lighting that is inevitable when shooting into museum cases. In a few examples we did not quite get the 100% rollout on cylindrical pots that would be ideal, but in most cases we succeeded, and we have displayed closeups of glyph bands for Mayanists everywhere to scrutinize.

We are grateful to Ms. Piper Wynn Severance, Senior Manager of Rights and Reproductions at LACMA, for permission to publish these pieces.

-Bruce Love

Photographs by Bruce Love; post-production image processing by James Neely



## Display Case Key 1-5



Image 1



Image 2



Image 3



Image 3 Glyph Detail

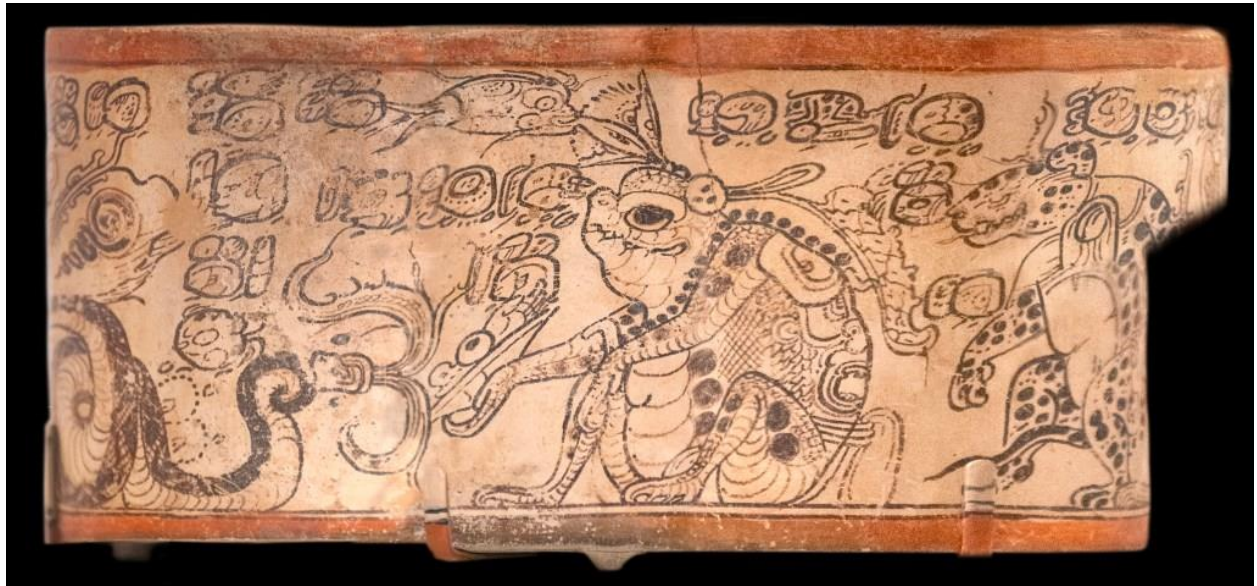


Image 4



Image 5



6

**Vessel Depicting Dueling Captives**

Guatemala, Northern Peten (Maya), 800-900 CE  
 Stucco with incised decoration and red pigment  
 Los Angeles County Museum of Art, Anonymous Gift (M.2010.175.812)

**Bowl with Monkeys**

Honduras, Uluu Valley (Maya), 600-1000 CE  
 Alabaster  
 Los Angeles County Museum of Art, Purchased with funds provided by Camille Chandler Frost (M.2002.109.256)

**Bowl**

Honduras, Uluu Valley (Maya), 600-1000 CE  
 Alabaster  
 Los Angeles County Museum of Art, Gift of Susan Lancaster (AC1986.48.7)

**Modeled Head of a Nobleman**

Mexico (Maya), 600-900 CE  
 Painted stucco  
 Los Angeles County Museum of Art, Gift of Constance McCormick Peering (AC1988.204.33)

**Papery Jewel (huunol uuh)**

Guatemala, Northern Peten (Maya), 400-750 CE  
 Stucco  
 Los Angeles County Museum of Art, Purchased with funds provided by Camille Chandler Frost (M.2010.175.243)

5

**Incised Conch Shell with Itzam K'an Ahk**

Guatemala, Honduras, or Mexico (Maya), 400-900 CE  
 Shell  
 Los Angeles County Museum of Art, Purchased with funds provided by Camille Chandler Frost (M.2010.175.847)

**Display Case Key 6**



Image 6 Detail



*Plate with Hero Twins  
and Skeletal Water Bird,  
"Blom Plate"*  
Mexico, Quintana Roo, Chetumal (Maya)  
600-800 CE  
Site: planted ceramic  
Museo Maya de Cancun y Zona Arqueologica  
de San Miguelito (70-42126)

**Display Case Key 7**



Image 7



Image 7 Glyph Detail



**Display Case Key 8-9**



Image 8



Image 8 Glyph Detail



Image 9



10

11

12

**Cylinder Vessel with Hero Twins  
and Lords of Death**  
Guatemala, Peten (Maya), 650–850 CE  
Slip-painted ceramic  
Los Angeles County Museum of Art, Purchased  
with funds provided by Cecilia Chandler Frost  
(M.2010.119.429)

24

**Dynastic Vase**  
Mexico or Guatemala, Southern Campeche  
or Northern Peten (Maya), 650–850 CE  
Slip-painted ceramic  
Los Angeles County Museum of Art,  
Anonymous gift (M.2010.119.5)

**Plate with Seated Ruler  
as Maize God**  
Guatemala, Northern Peten (Maya),  
650–850 CE  
Slip-painted ceramic  
Los Angeles County Museum of Art,  
Anonymous gift (M.2010.119.714)

**Cylinder Vessel with Maize God  
Dancers and Dwarfs**  
Guatemala, Peten, possibly Yucatan  
or vicinity (Maya), 650–850 CE  
Slip-painted ceramic  
Los Angeles County Museum of Art, Purchased  
with funds provided by Cecilia Chandler Frost  
(M.2010.119.495)

### Display Case Key 10–12



Image 10



Image 10 Glyph Detail



Image 11



Image 12



13

*Square vessel, "Vase of the  
Eleven Gods"*  
Canaanite, Middle Bronze, Sheraton  
ca. 1800-1700 B.C.  
Gift of the British Museum of Art, London  
Accession No. 1851.10.1

*Vessel with Codex-Style Scene*  
Canaanite, Middle Bronze, Sheraton, Sheraton  
ca. 1800-1700 B.C.  
Gift of the British Museum of Art, London  
Accession No. 1851.10.1

**Display Case Key 13**



Image 13



Image 13 Glyph Detail



Display Case Key 14-16



Image 14



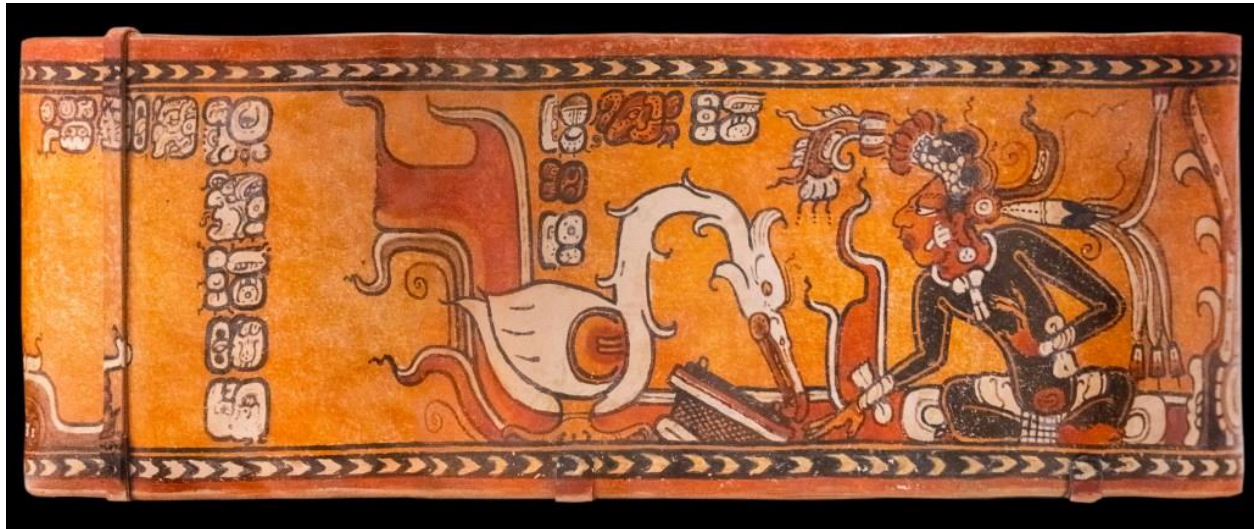
Image 15



Image 16



**Display Case Key 17-20**



**Image 17**



Image 18



Image 19

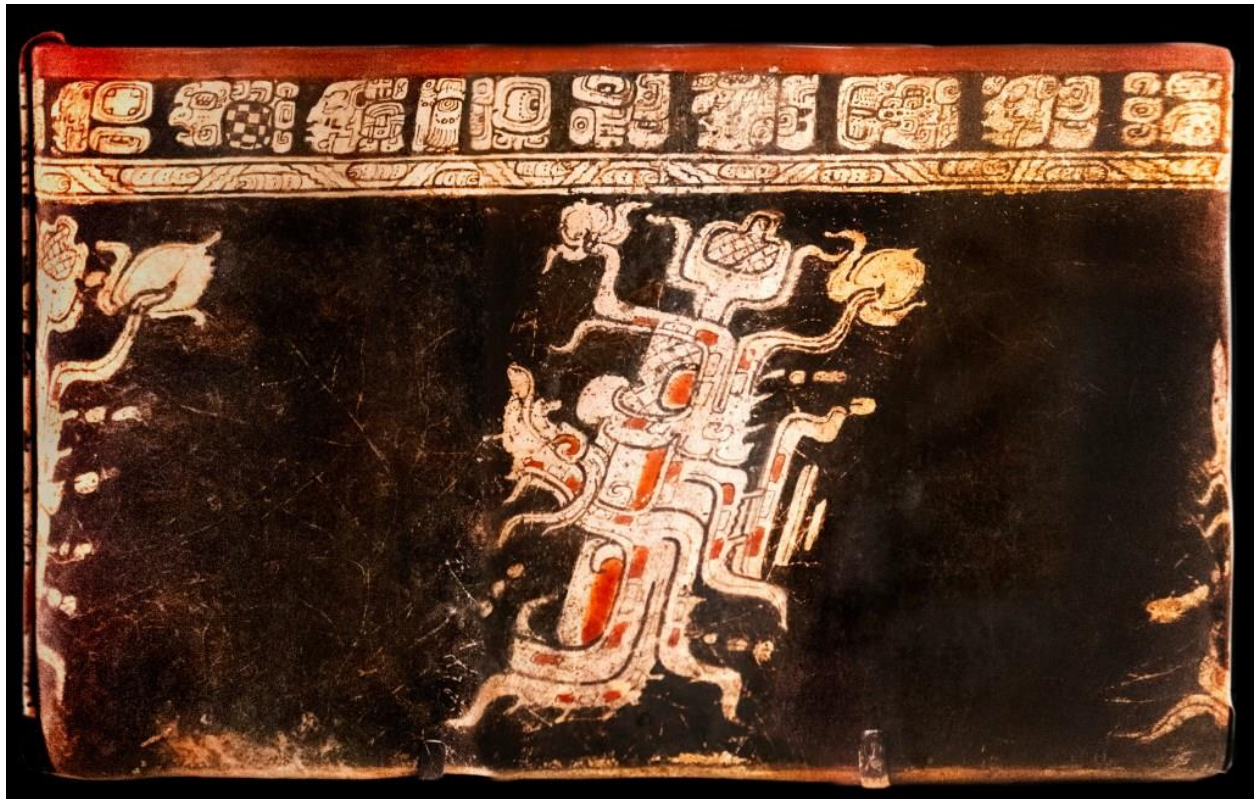


Image 20



21

**Display Case Key 21**



**Image 21 Top Medallion and Detail Showing Depth of Relief**



**Image 21 Incised Side Medallions**

**Suggested Citation:** Love, Bruce. “Corpus Volume 19: Classic Maya Ceramics with Glyphs at Los Angeles County Museum of Art (LACMA).” Contributions to Mesoamerican Studies, April 28, 2026. <https://brucelove.com/corpus/corpus-volume-019>.



The corpus photographs and drawings may be freely used and distributed in non-commercial use and are licensed under the Creative Commons Attribution-Non Commercial-Share Alike 4.0 International License. To view a copy of this license, visit: <http://creativecommons.org/licenses/by-nc-sa/4.0>